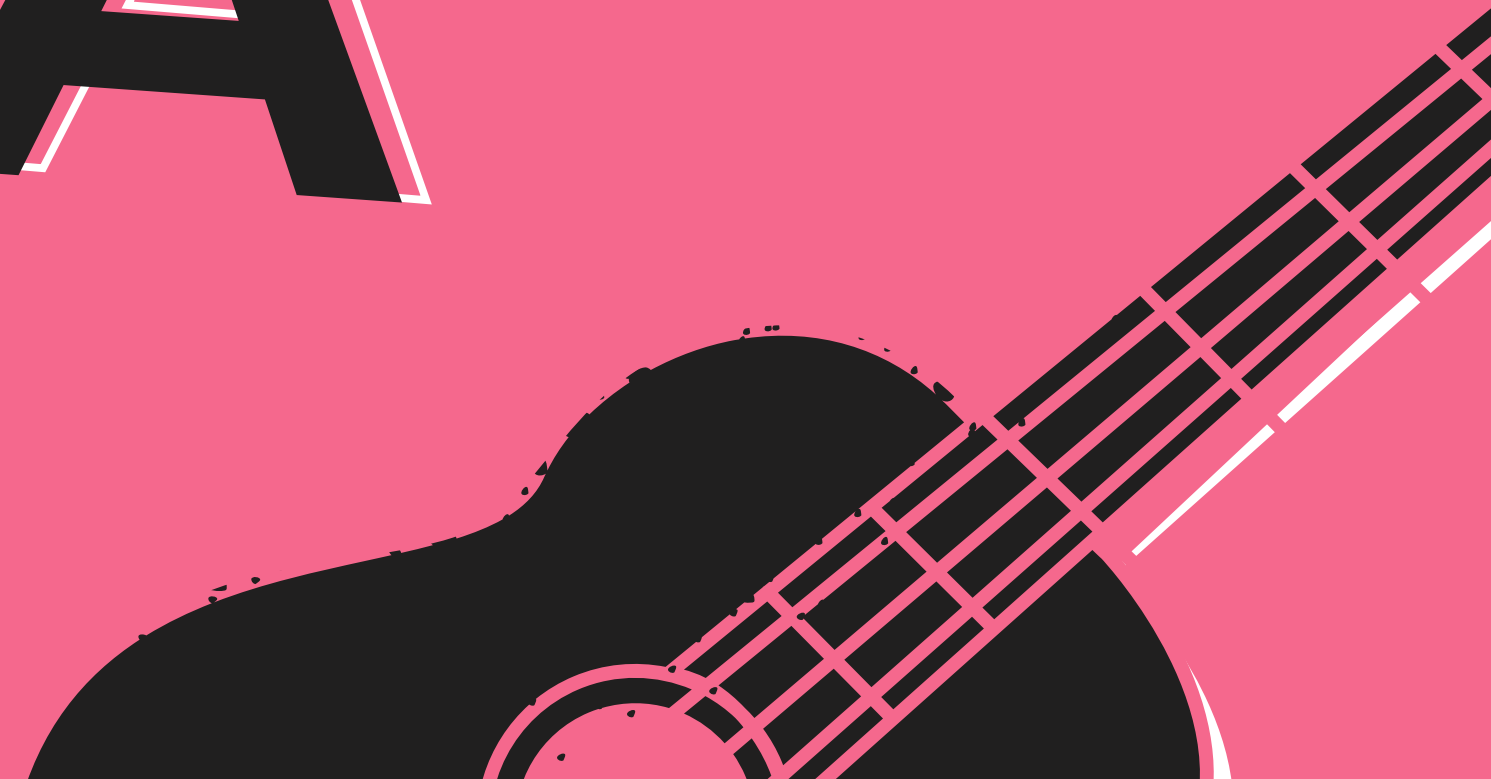
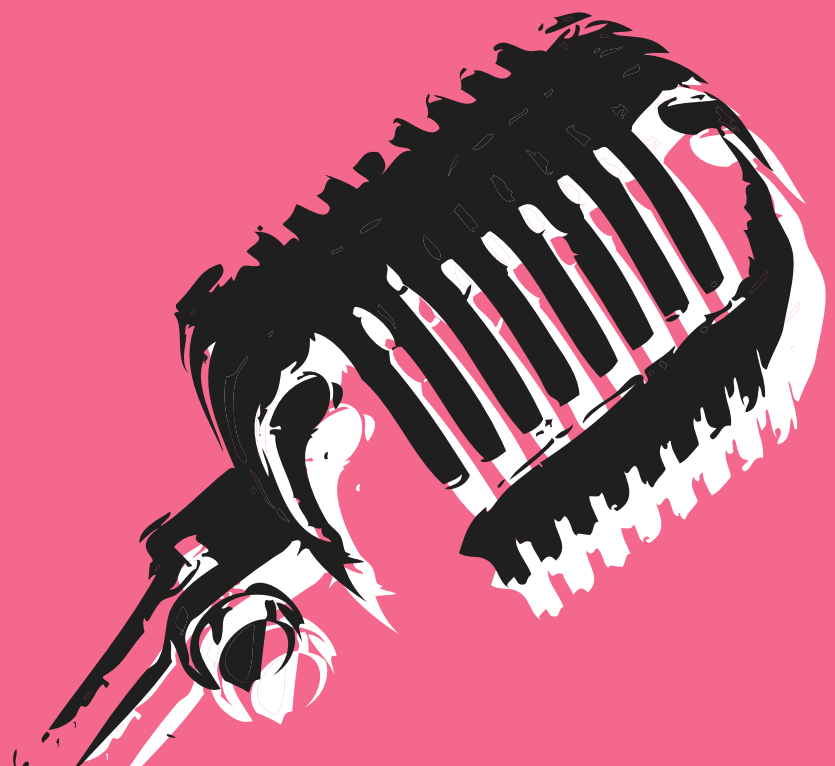
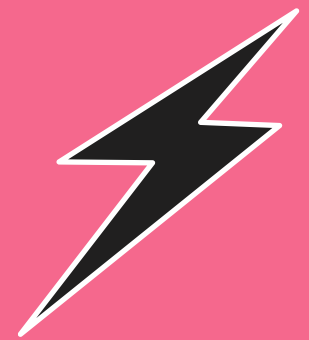


BEAT & DATA

Spotify dataset






CHI SIAMO

Progetto della 2AP del liceo
scientifico "Enrico Fermi" di
Aversa
(Sede distaccata di Parete)

Let's start!





DESCRIZIONE DEL DATASET

Variabili qualitative

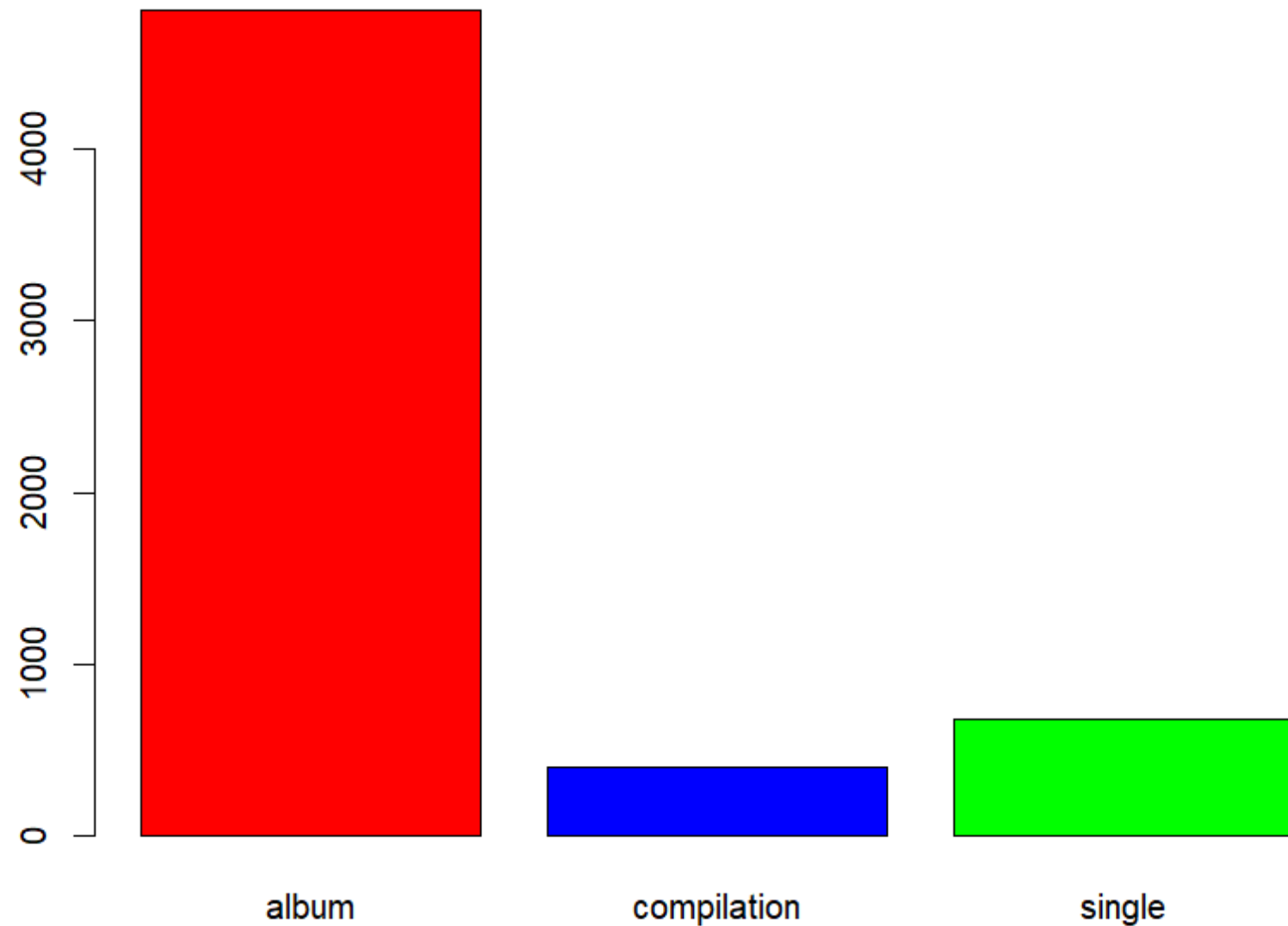
- Artista
- Album
- Tipo di Album

Variabili quantitative

- Commenti
- Likes
- Visualizzazioni
- ecc...

ANALISI DELLA FREQUENZA

tipologia di album



```
frequenza_album <- table(album_tipo)  
barplot(frequenza_album)
```

QUASI TUTTE LE CANZONI
CHE ASCOLTIAMO FANNO
PARTE DI UN ALBUM

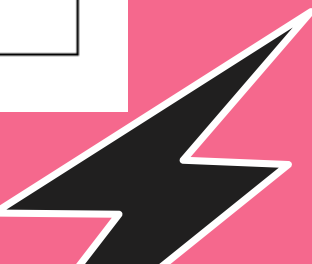
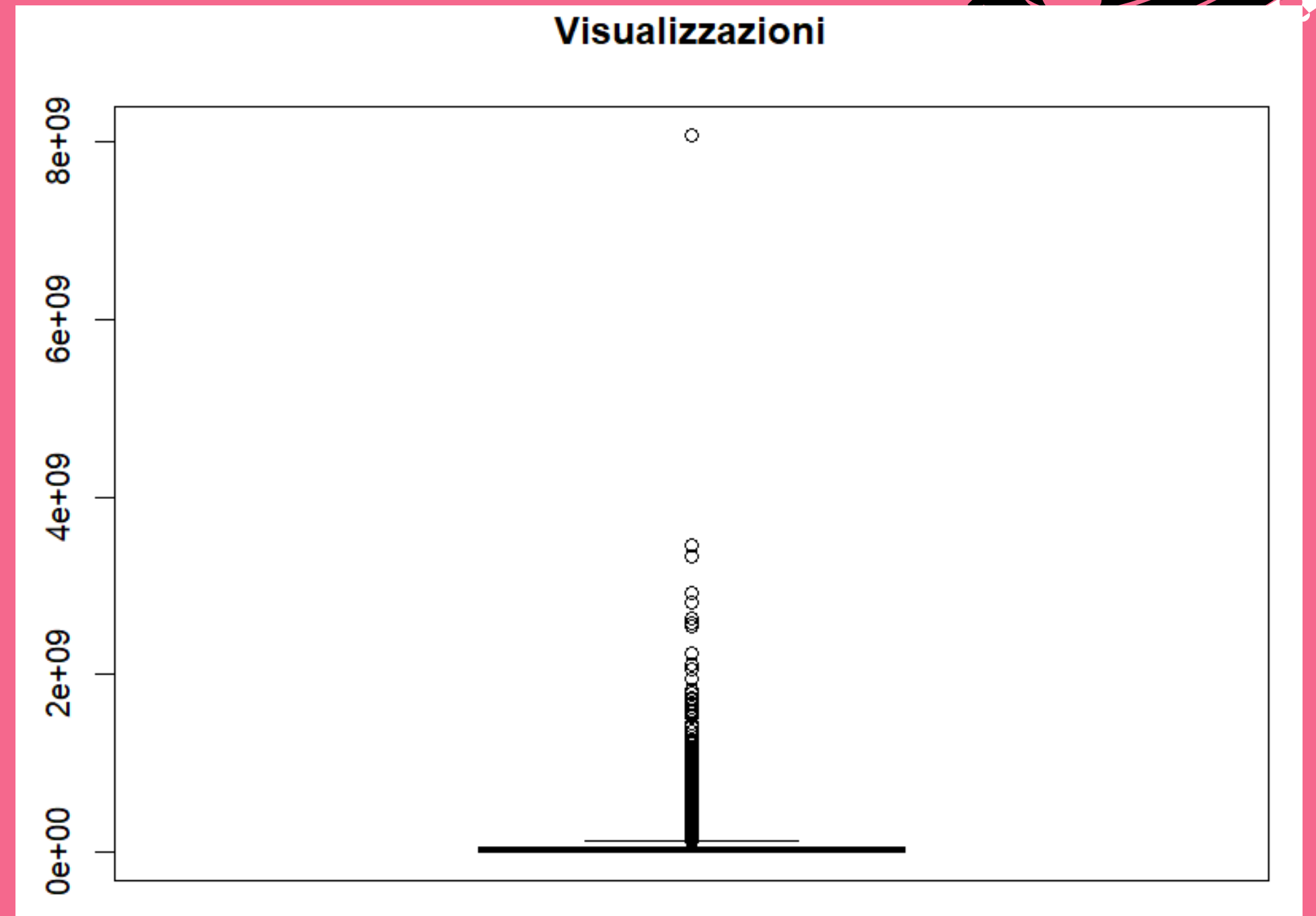
VISUAL



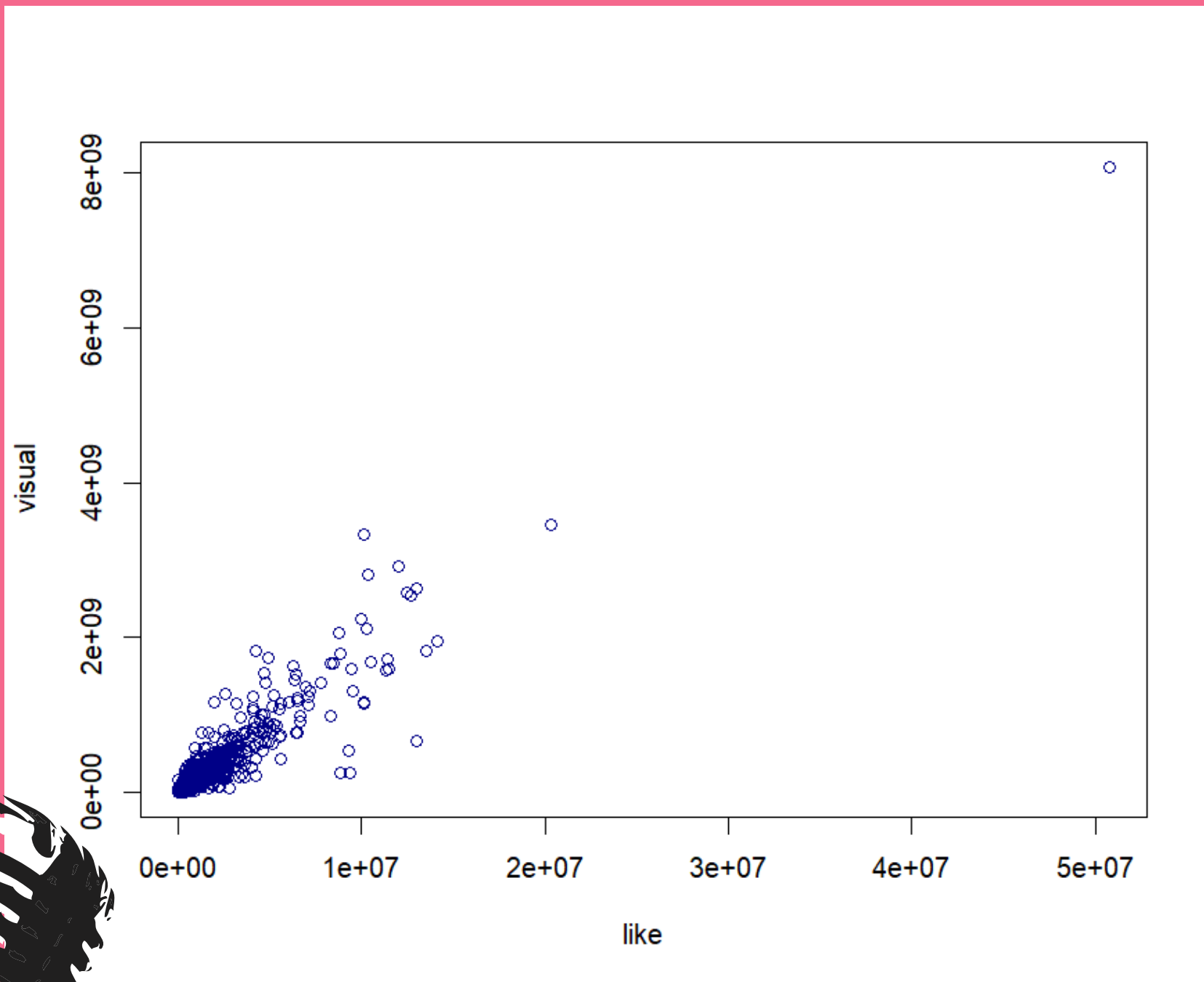
summary(visual)
boxplot(visual)



**I DATI SONO MOLTO VICINI...
NON C'È VARIETÀ NEL
DATASET**

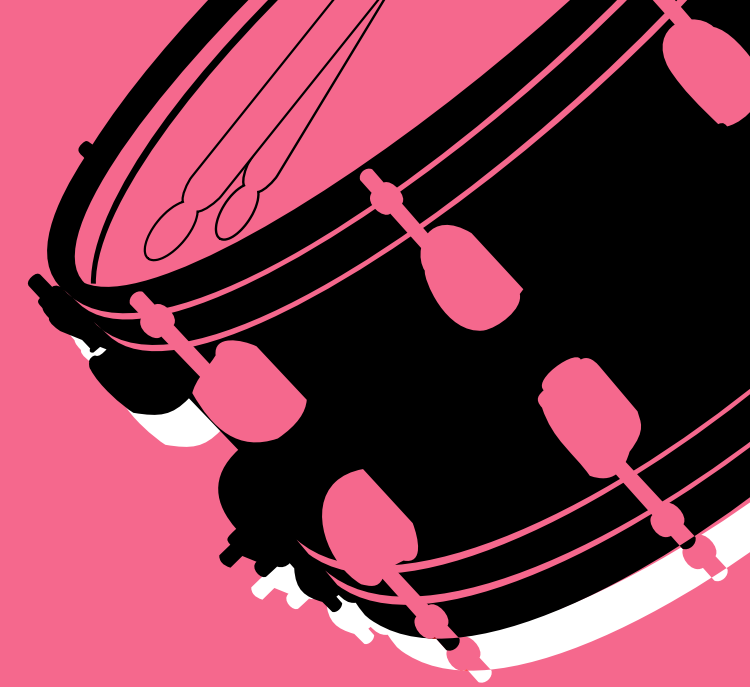
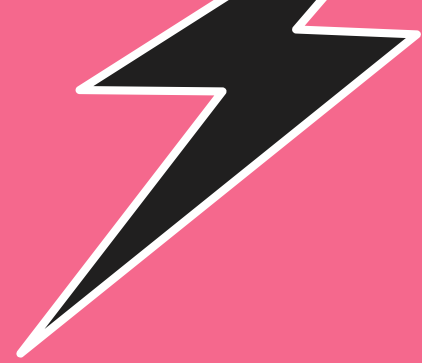


CORRELAZIONE



```
C <- cor(visual, like)  
plot(like, visual)
```

**TRA LIKE E VISUAL C'È UN
LEGAME STRETTISSIMO:
SE UNA CANZONE HA TANTI
LIKE SICURAMENTE AVRÀ
TANTE VISUAL!**



THANK YOU

For Playing!

